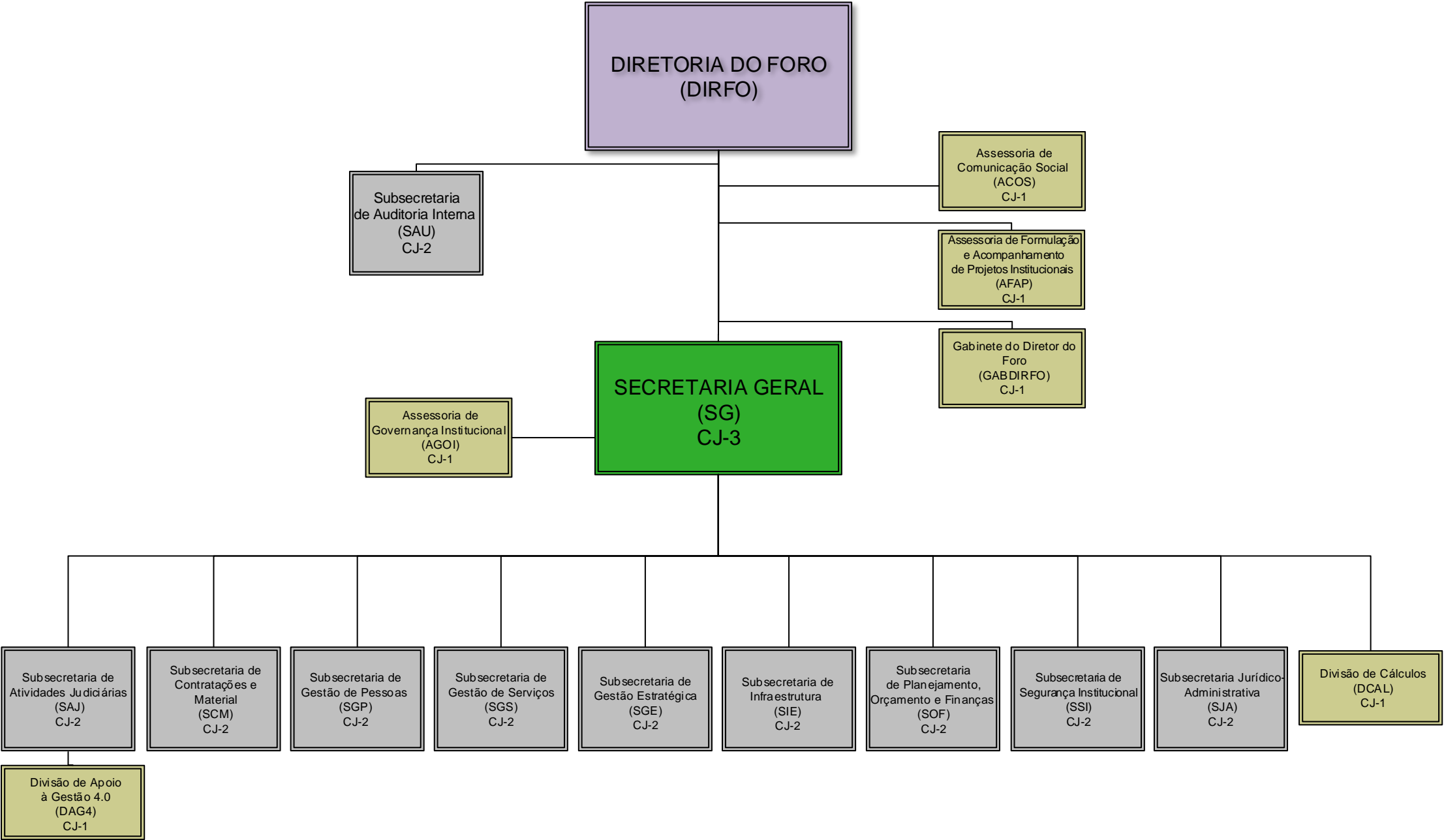
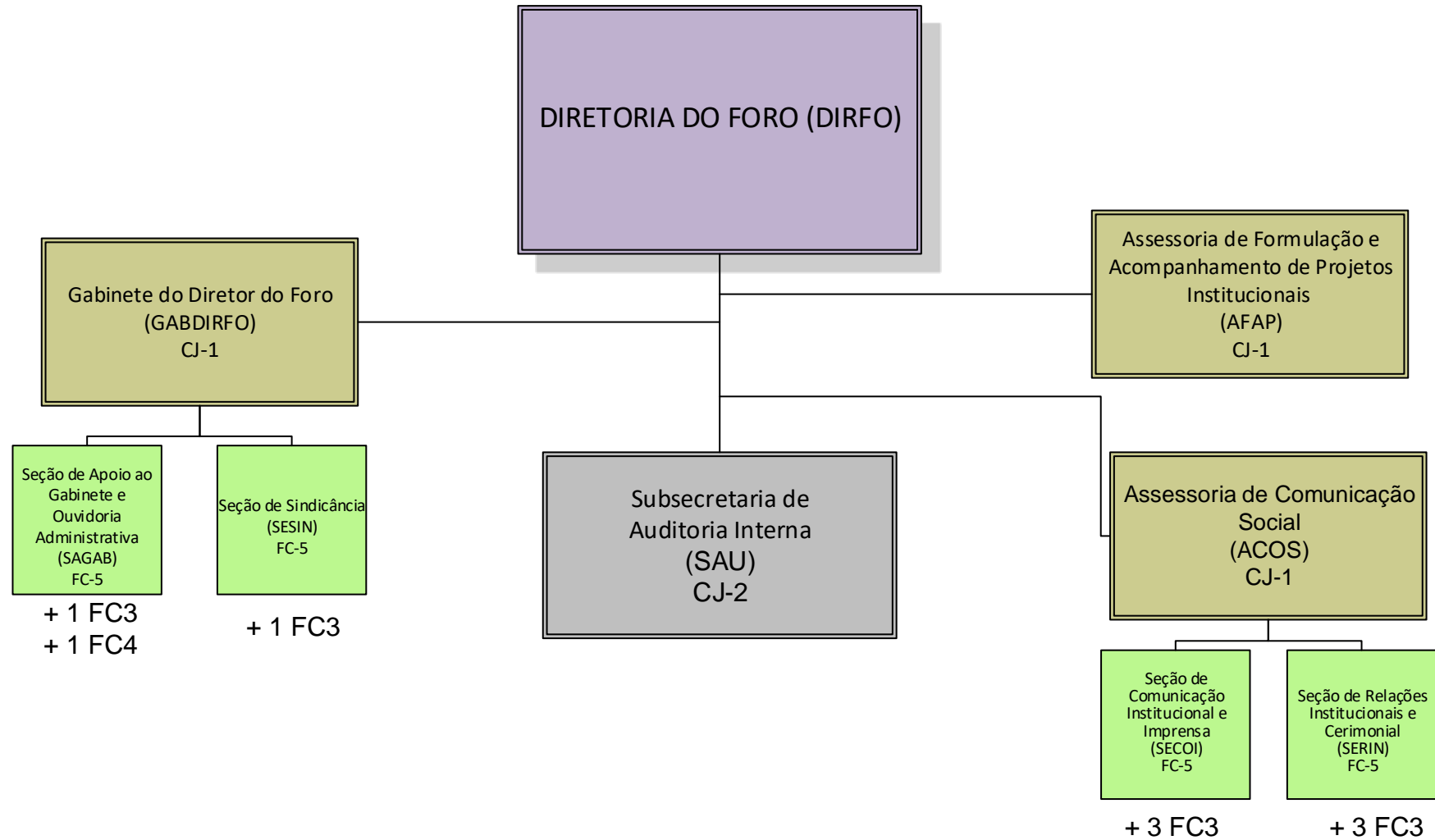


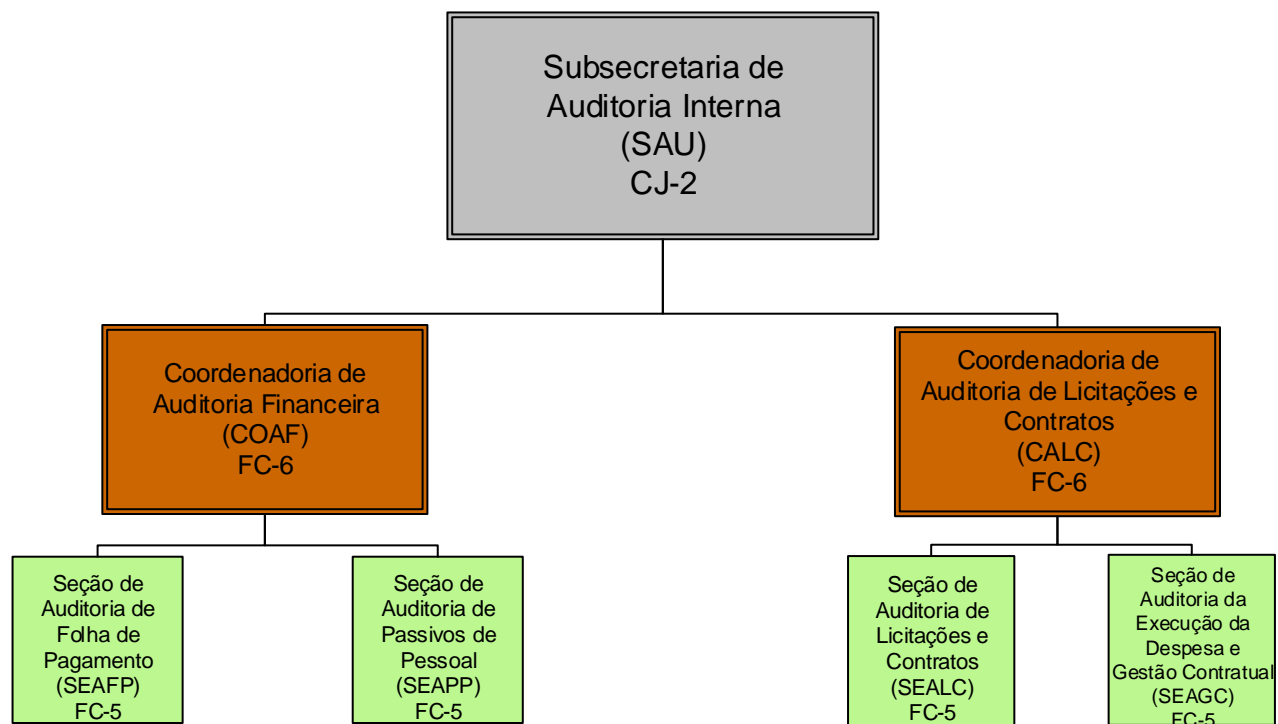
ADMINISTRAÇÃO DA SEÇÃO JUDICIÁRIA DO RIO DE JANEIRO



DIRETORIA DO FORO

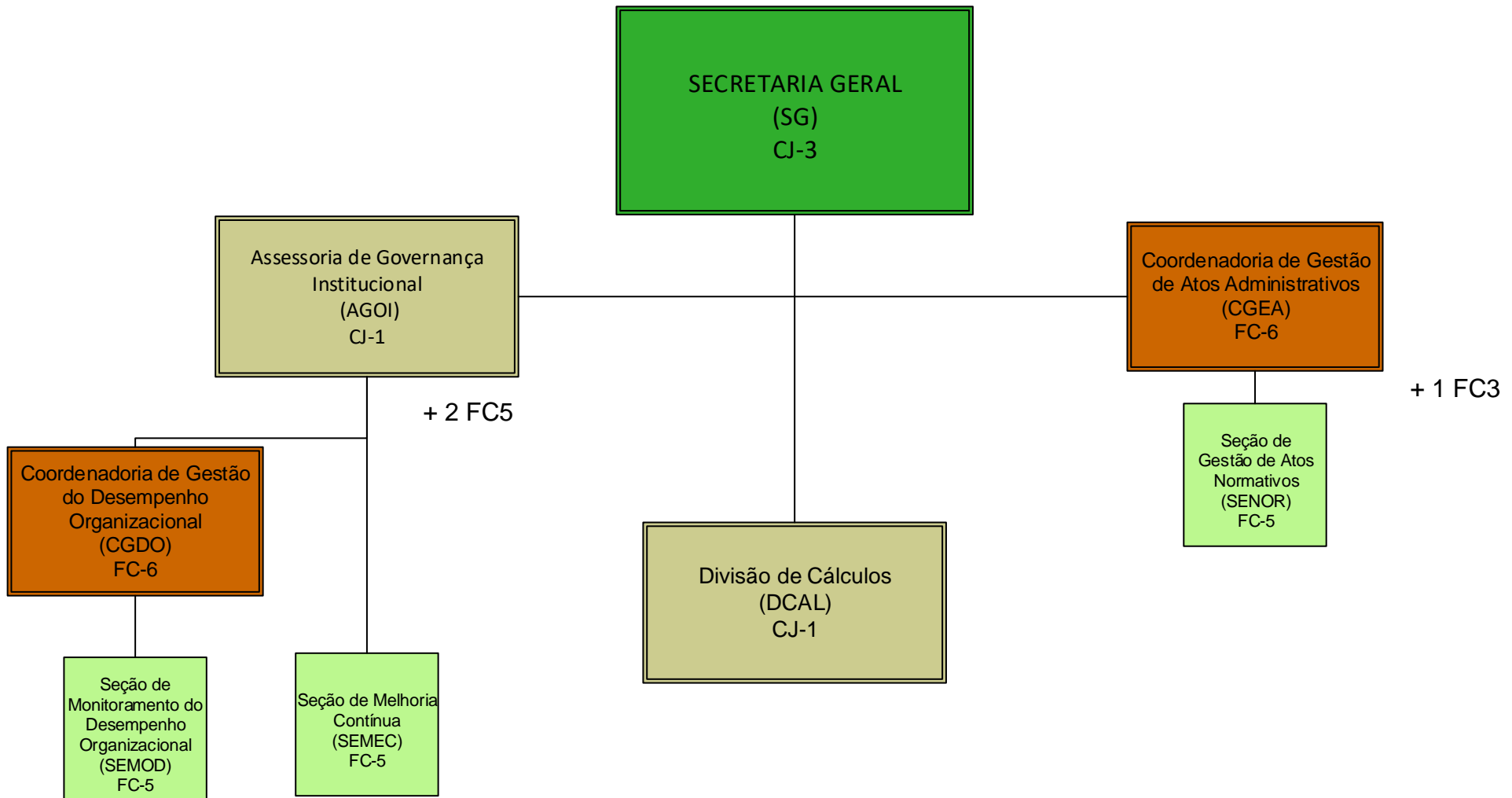


SUBSECRETARIA DE AUDITORIA INTERNA (SAU)

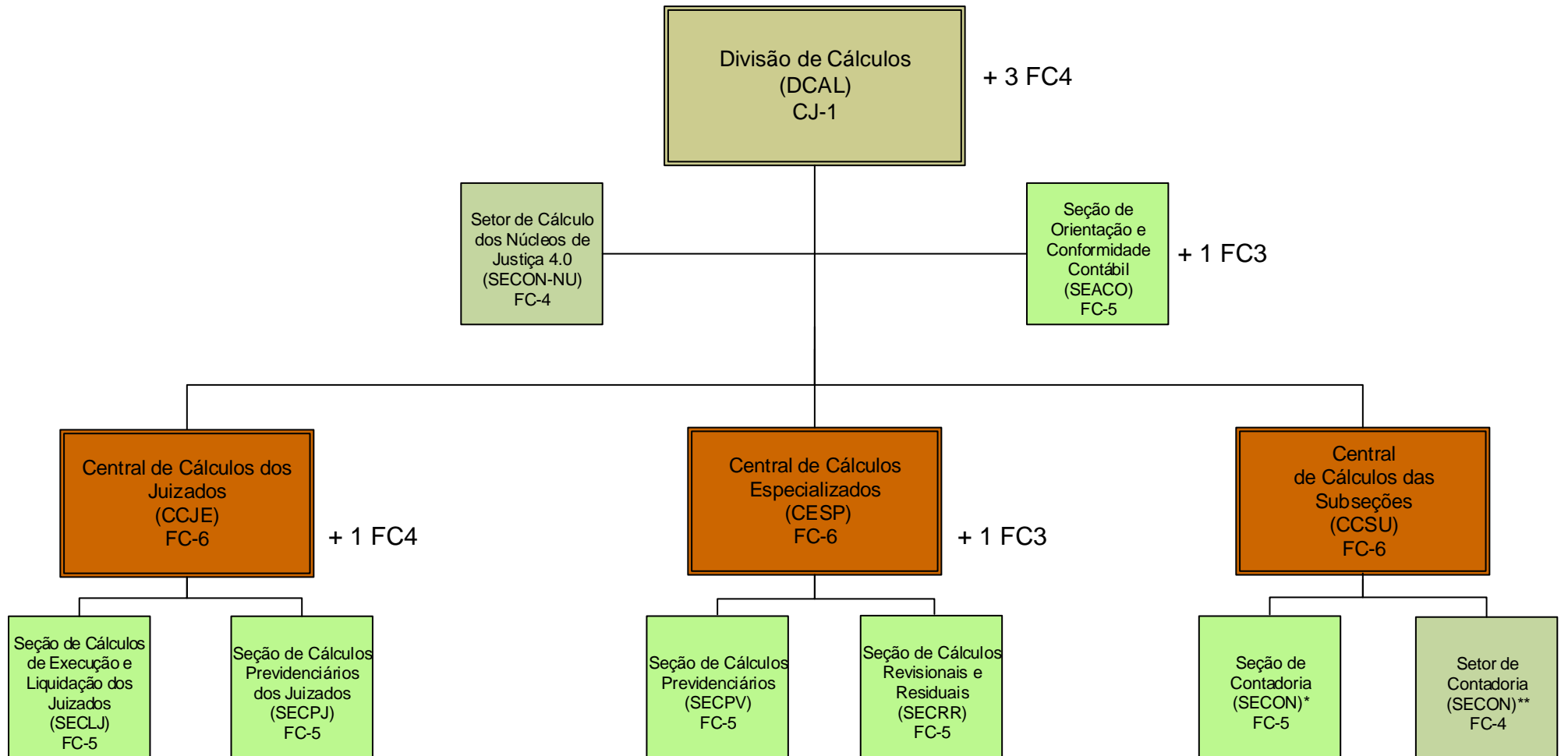


+ 1 FC3

SECRETARIA GERAL



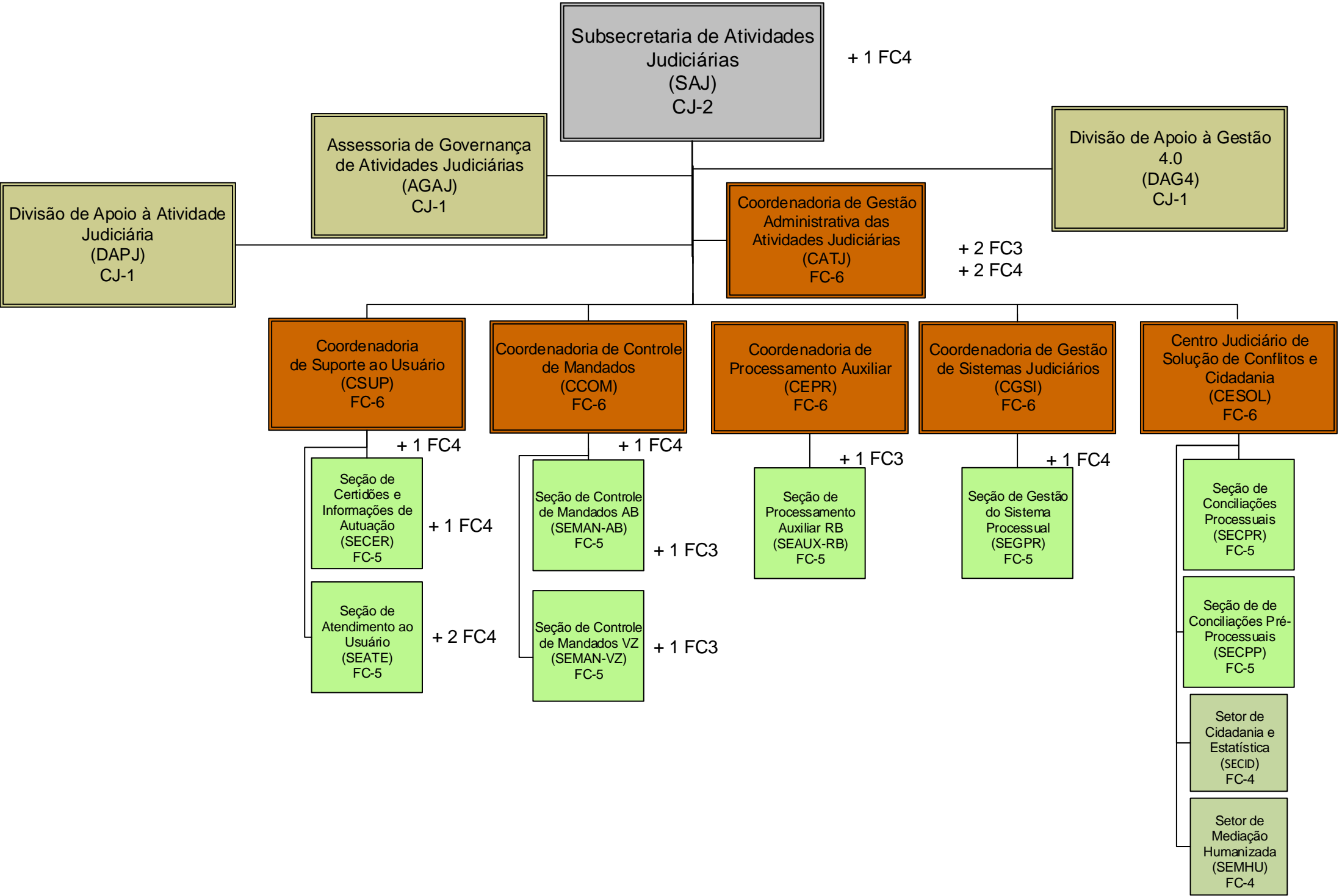
CÁLCULOS JUDICIAIS



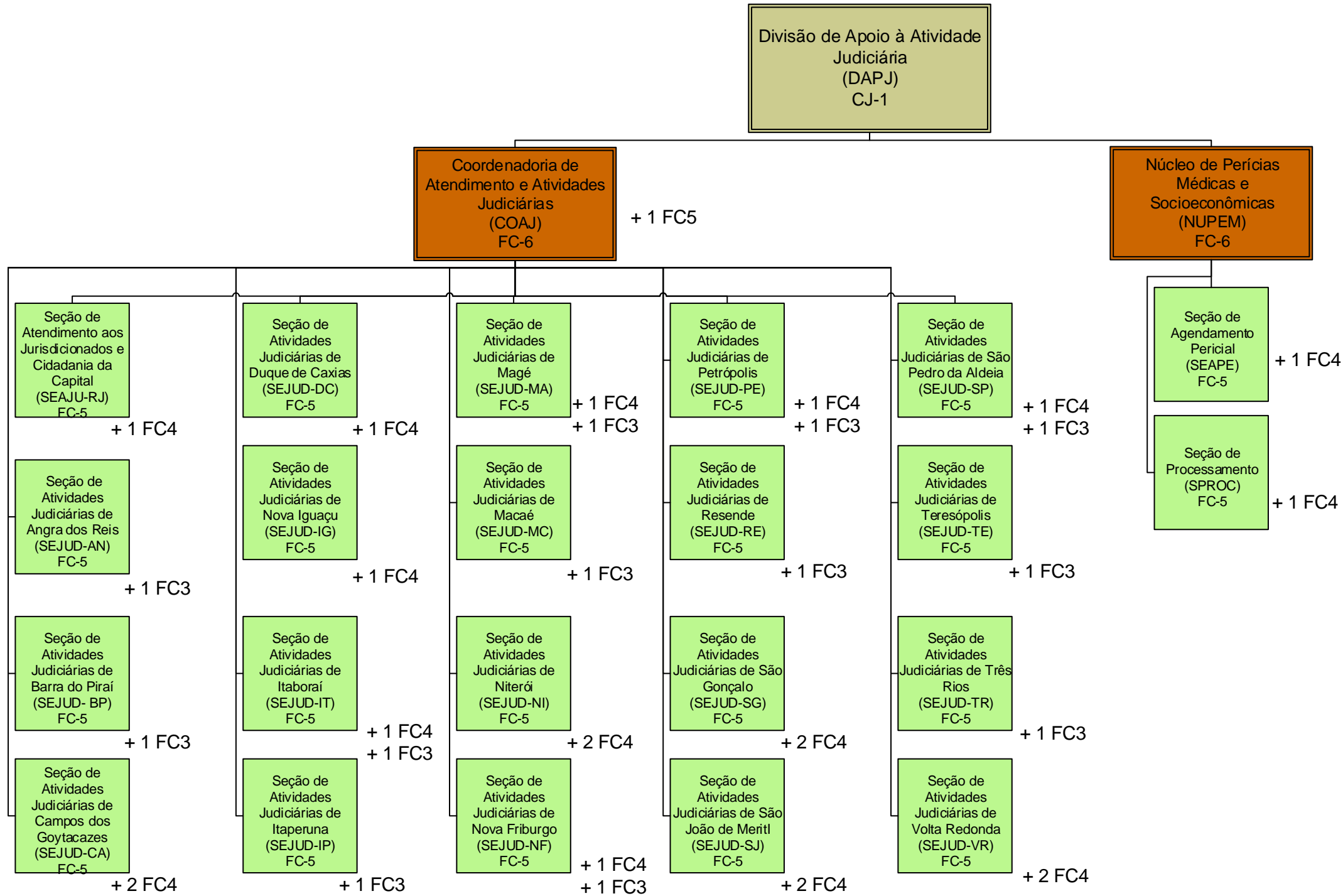
* Campos dos Goytacazes (SECON-CA); Nova Friburgo (SECON-NF); Nova Iguaçu (SECON-IG); Niterói (SECON-NI); Petrópolis (SECON-PE); Resende (SECON-RE); São Gonçalo (SECON-SG); São João de Meriti (SECON-SJ); São Pedro da Aldeia (SECON-SP); Volta Redonda (SECON-VR)

** Barra do Piraí (SECON-BP); Itaperuna (SECON-IP); Magé (SECON-MA); Três Rios (SECON-TR)

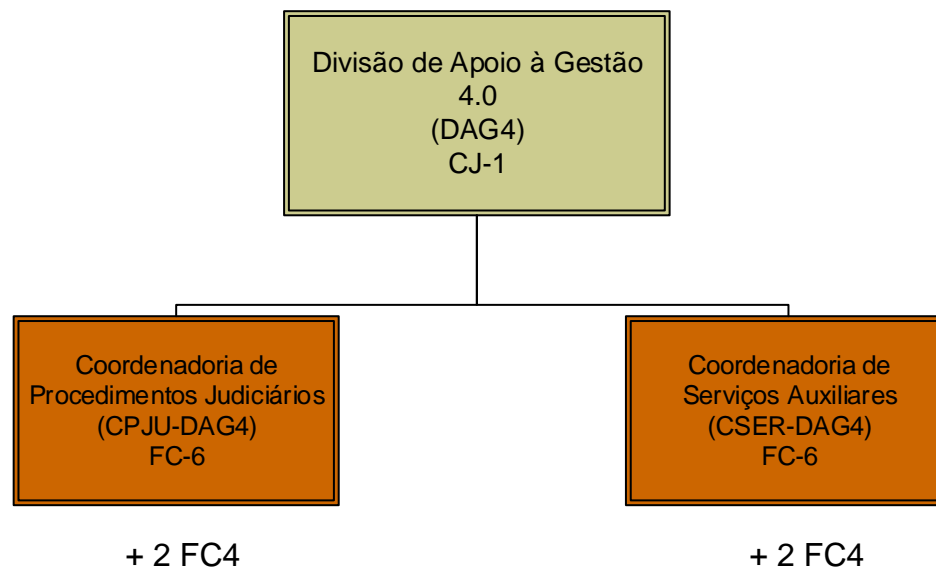
SUBSECRETARIA DE ATIVIDADES JUDICIÁRIAS



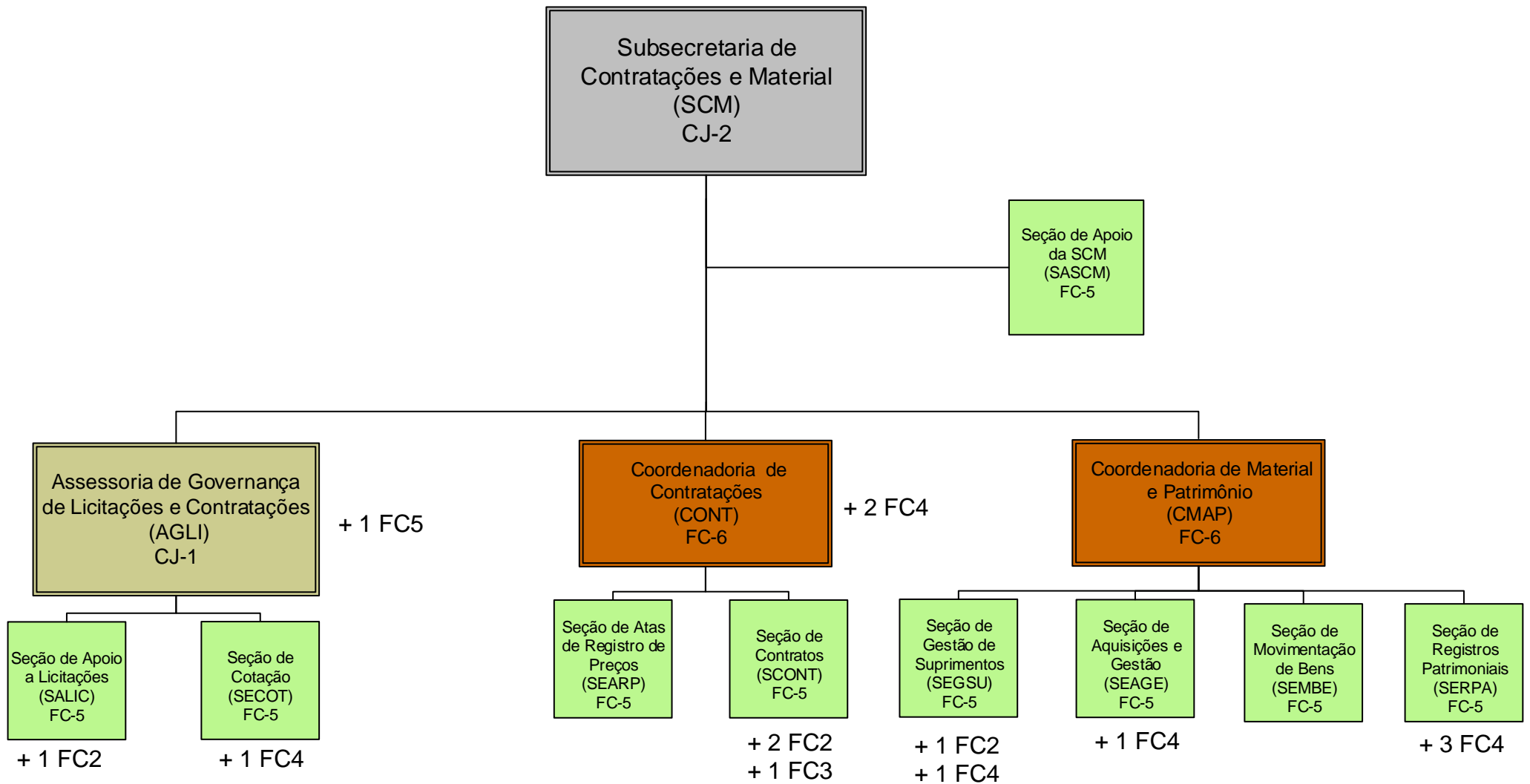
DIVISÃO DE APOIO À ATIVIDADE JUDICIÁRIA (DAPJ)



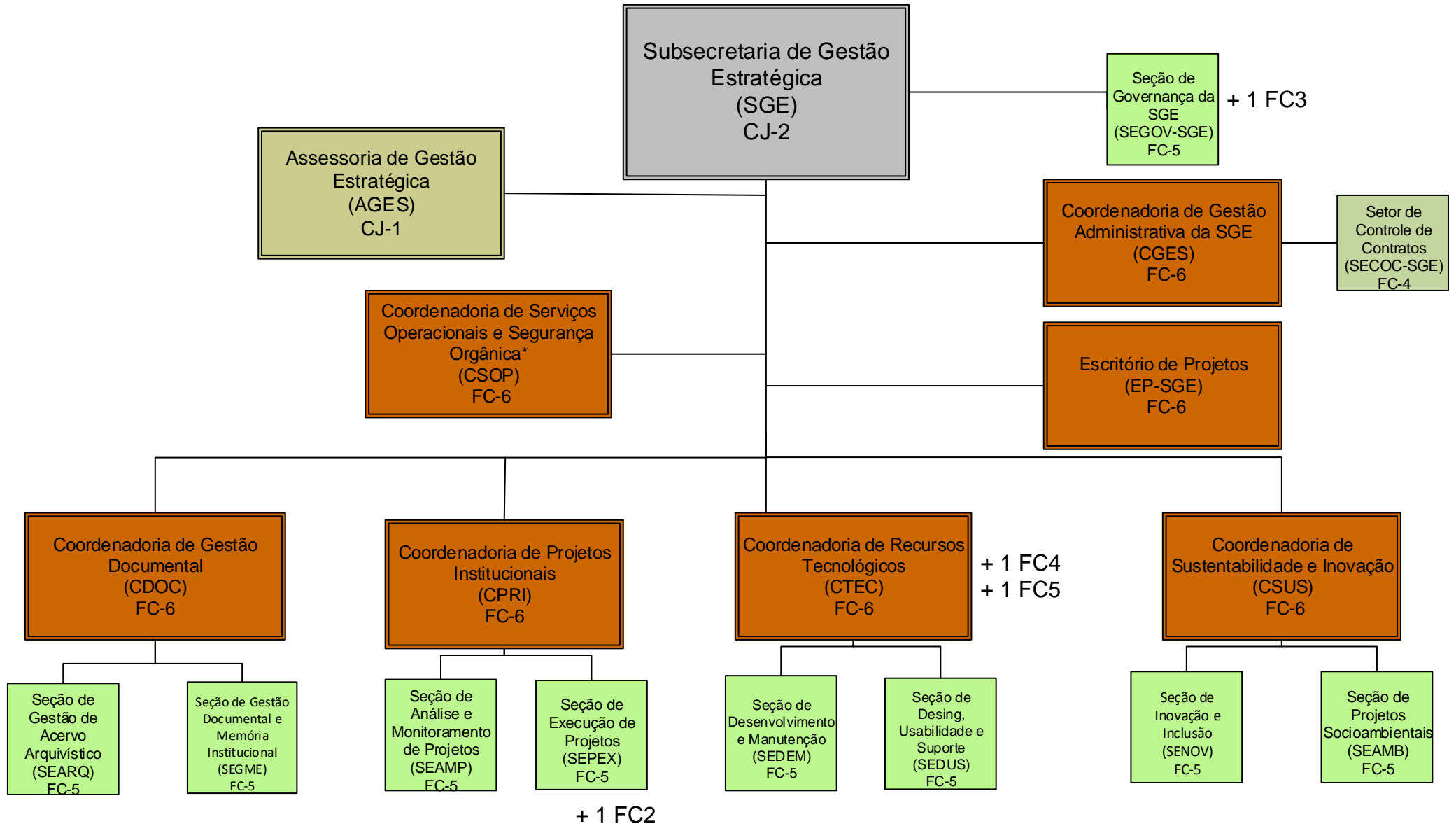
DIVISÃO DE APOIO À GESTÃO 4.0 (DAG4)



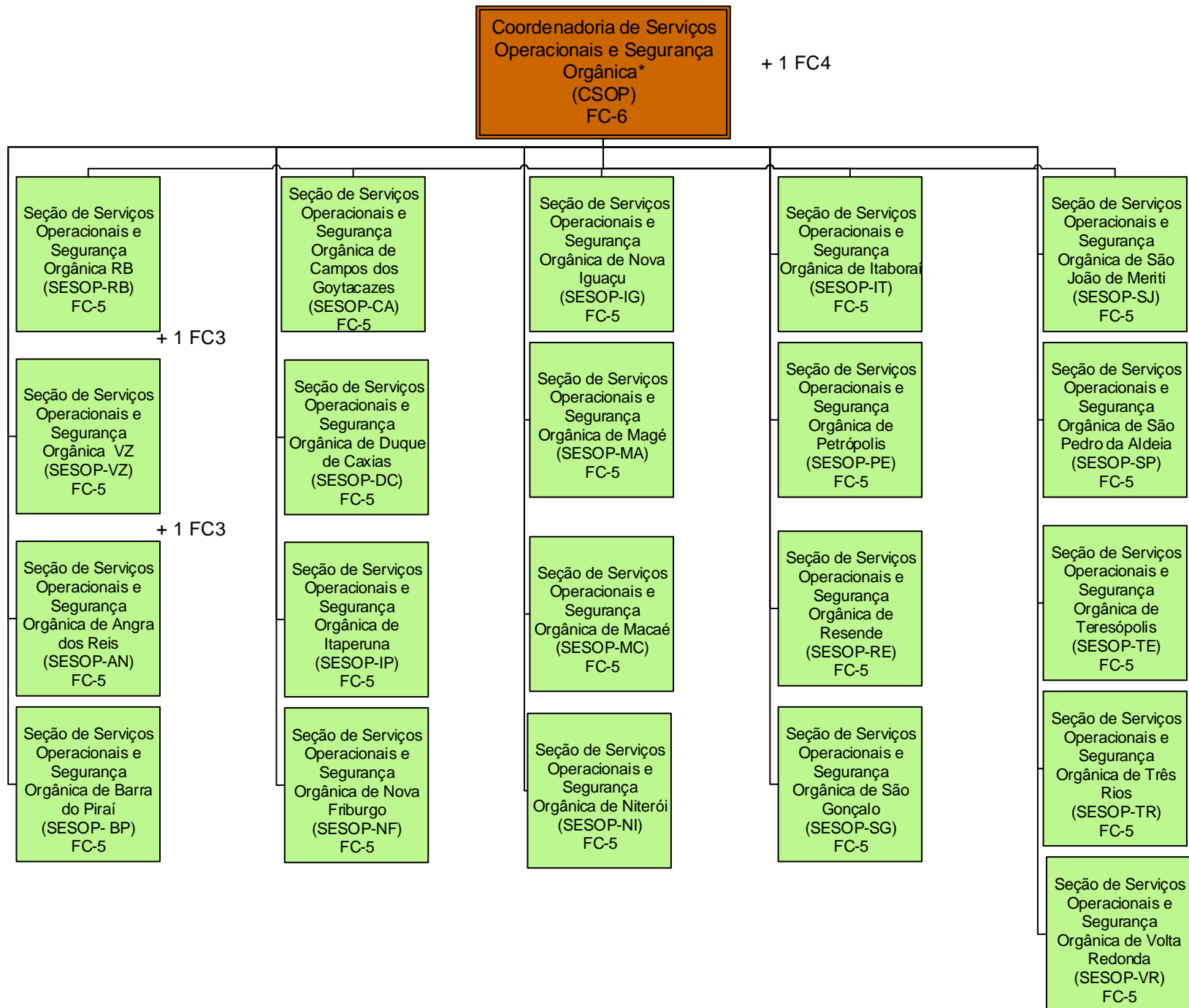
SUBSECRETARIA DE CONTRATAÇÕES E MATERIAL



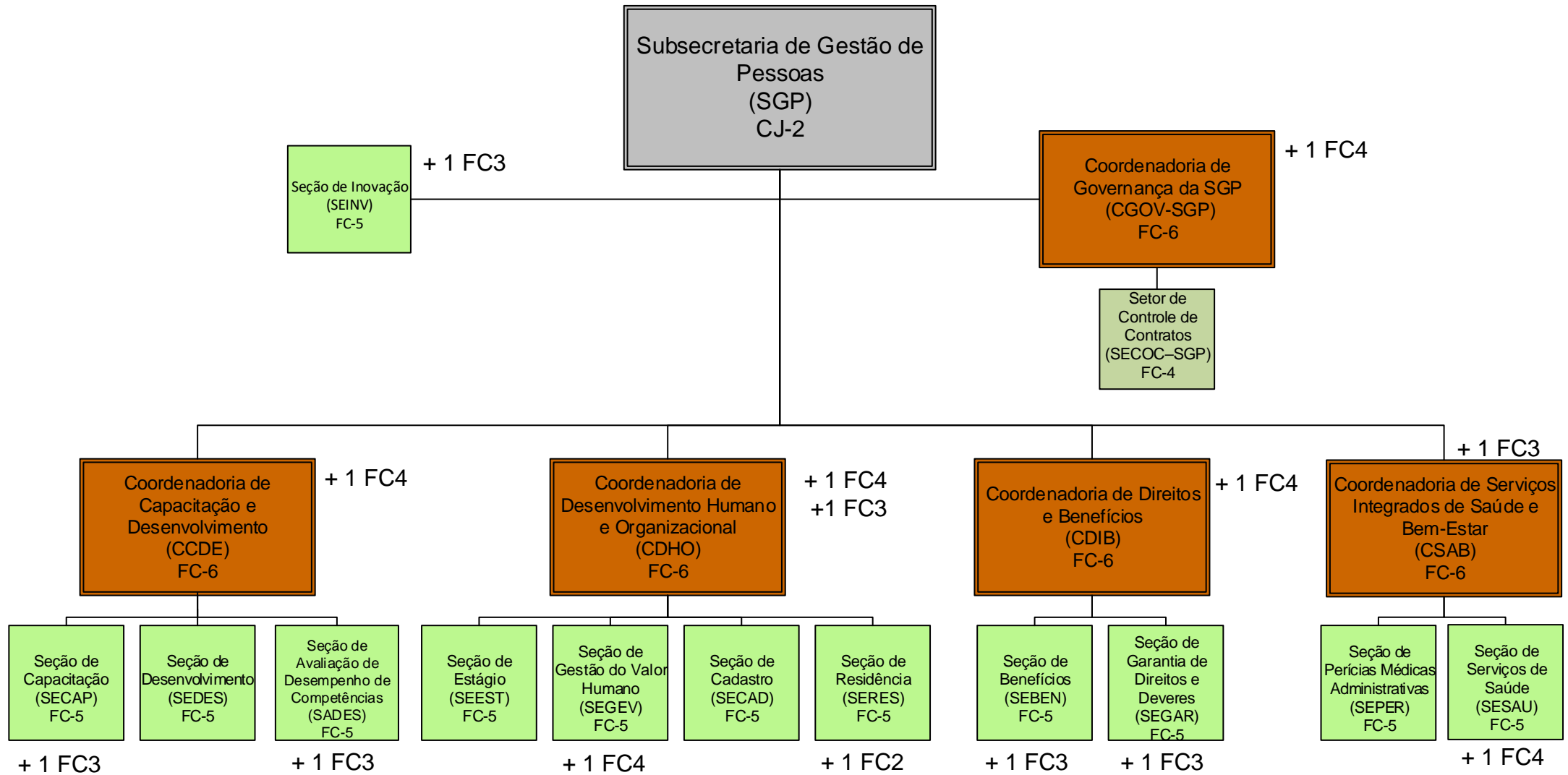
SUBSECRETARIA DE GESTÃO ESTRATÉGICA



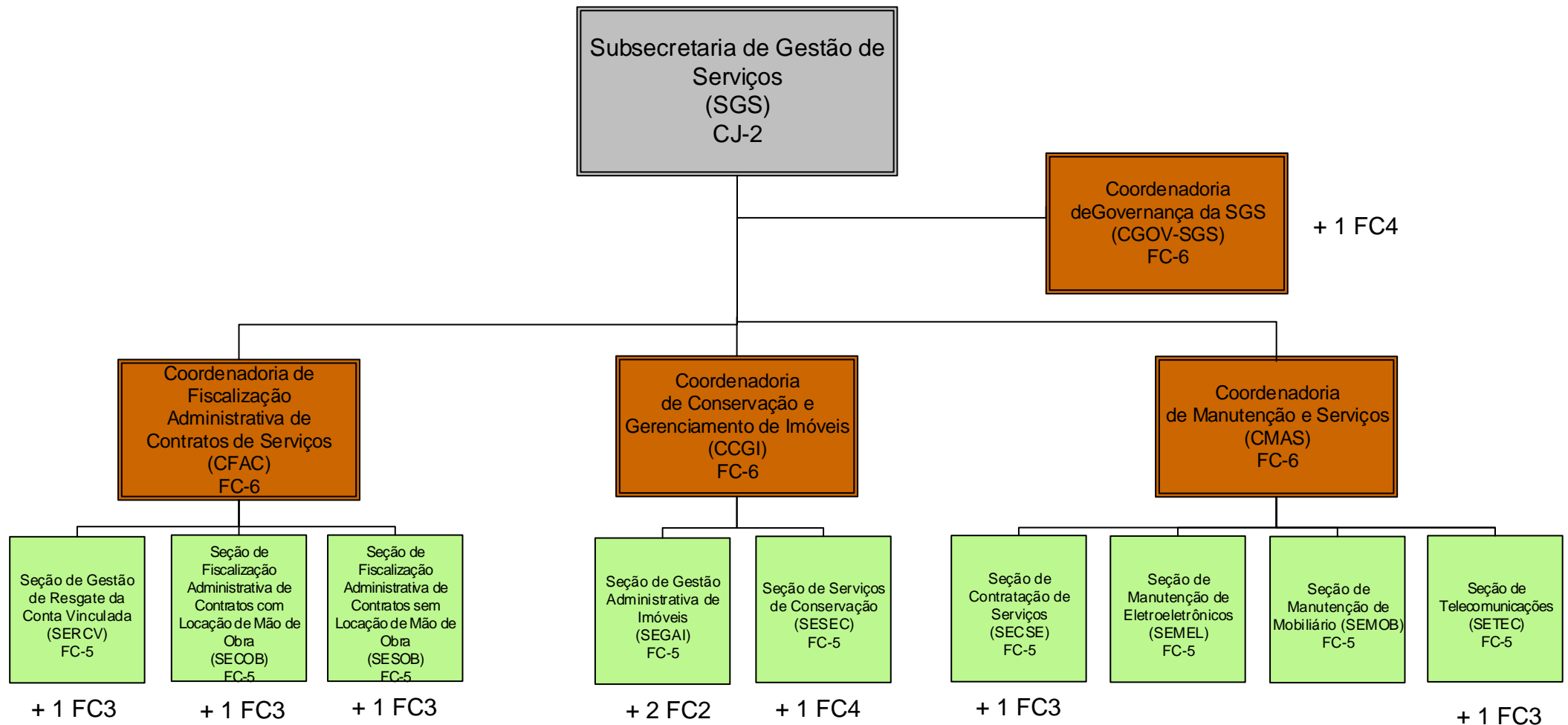
SERVIÇOS OPERACIONAIS E SEGURANÇA ORGÂNICA: CAPITAL E SUBSEÇÕES JUDICIÁRIAS



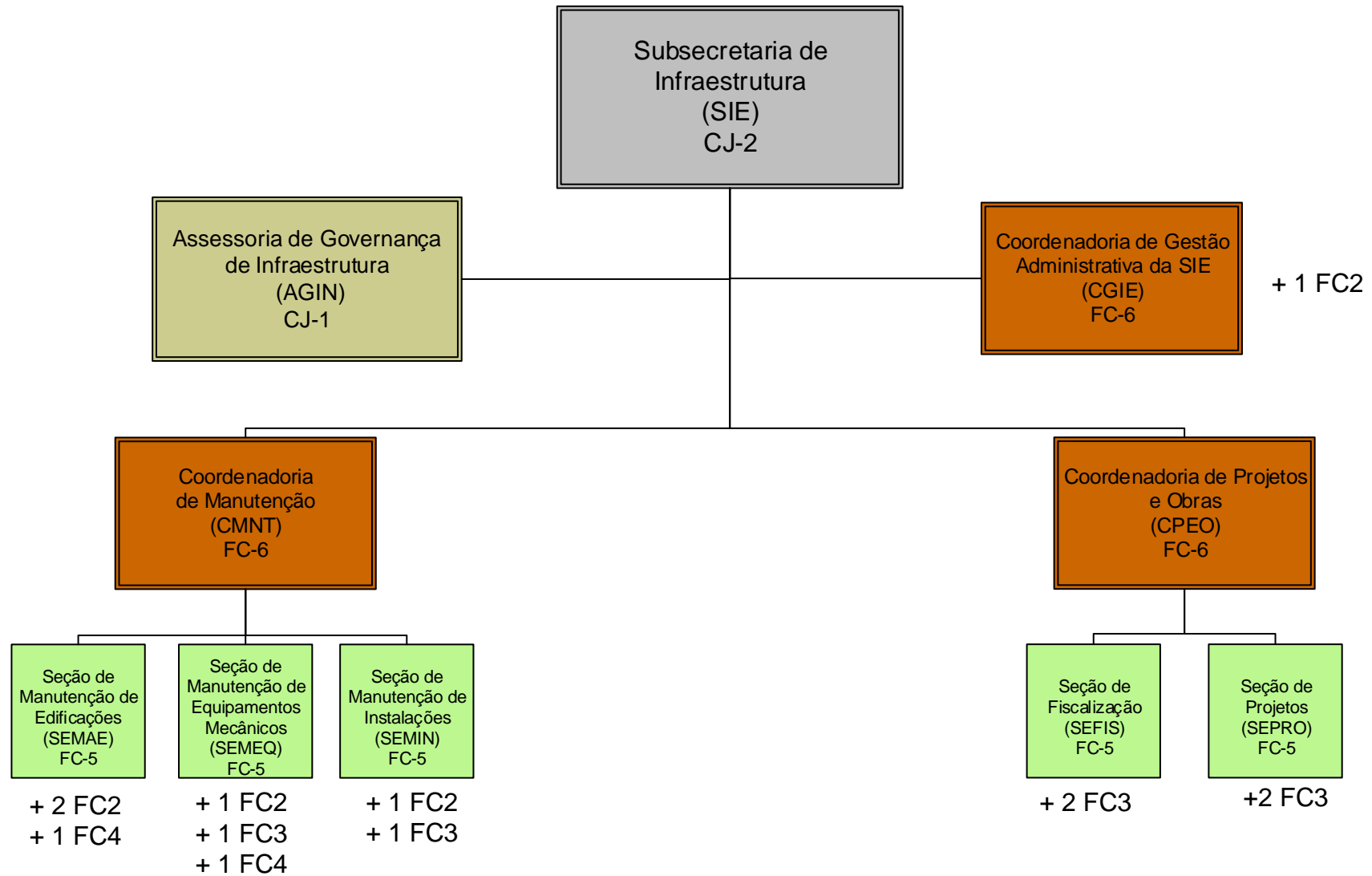
SUBSECRETARIA DE GESTÃO DE PESSOAS



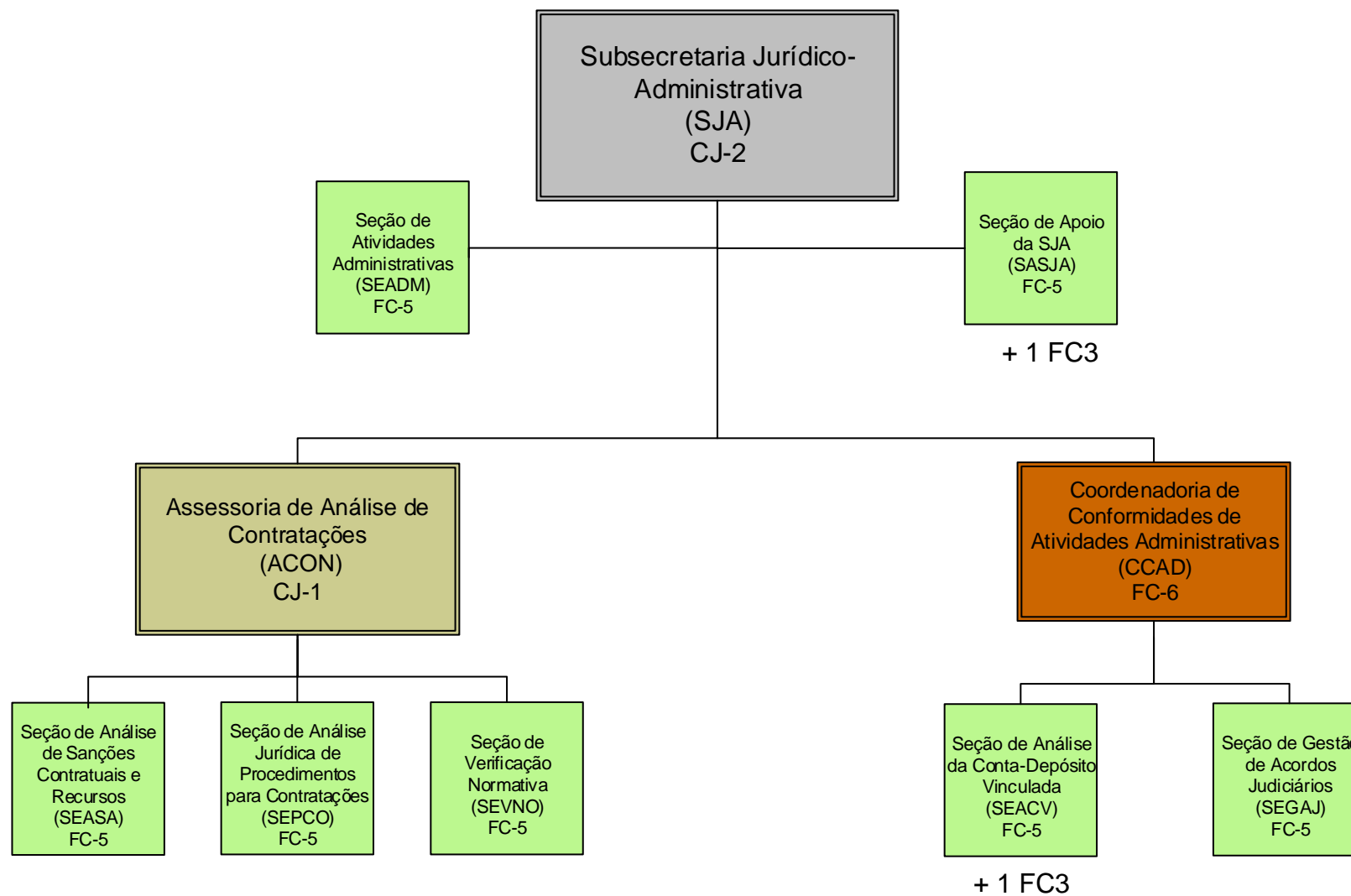
SUBSECRETARIA DE GESTÃO DE SERVIÇOS



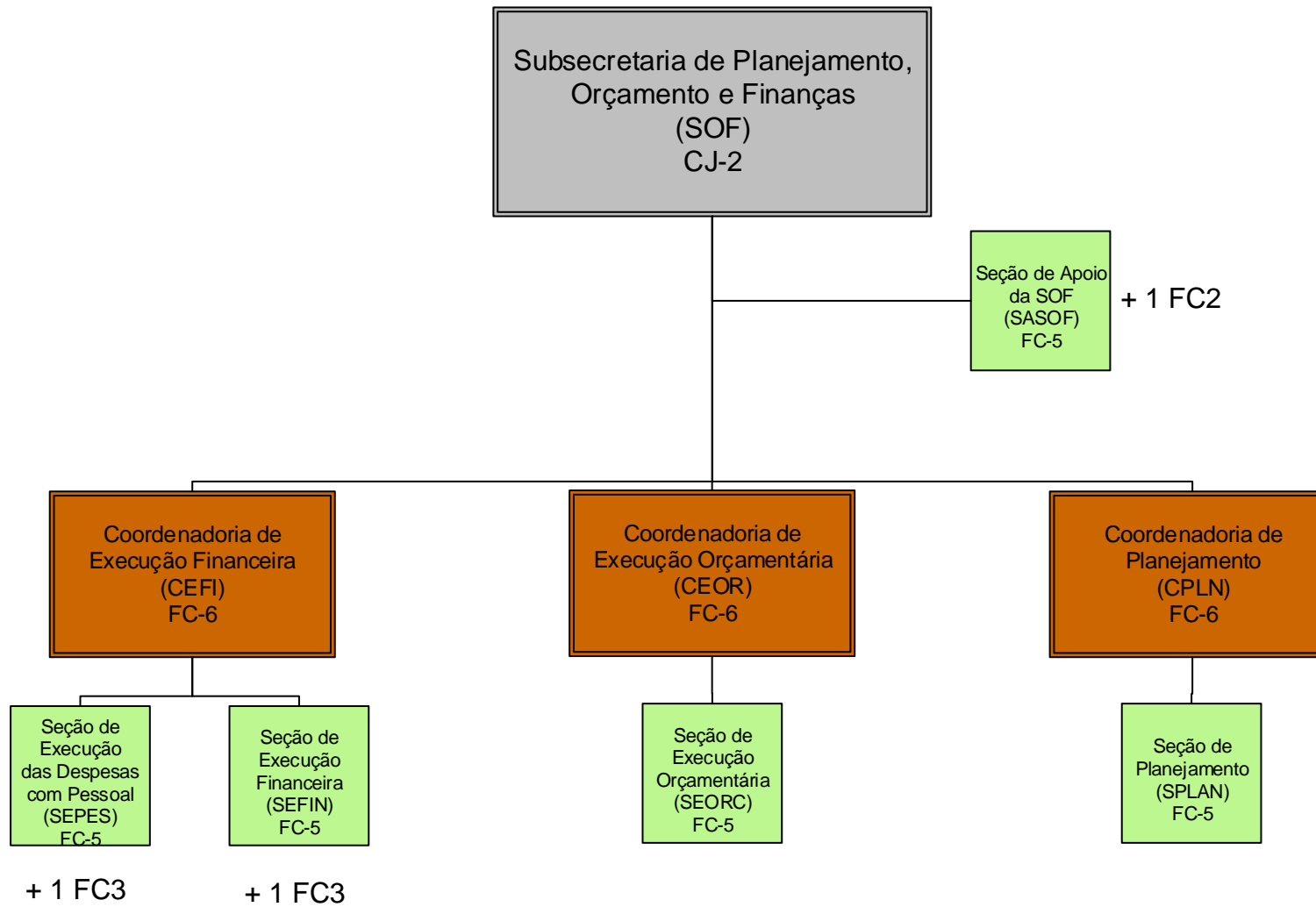
SUBSECRETARIA DE INFRAESTRUTURA



SUBSECRETARIA JURÍDICO-ADMINISTRATIVA



SUBSECRETARIA DE PLANEJAMENTO, ORÇAMENTO E FINANÇAS



SUBSECRETARIA DE SEGURANÇA INSTITUCIONAL

